

# Optional Services Catalog

## --Customer Switching and Accessorial Services



CPDR and SCRF are  
RailAmerica companies

[www.railamerica.com](http://www.railamerica.com)

Please contact your local  
marketing representative if you  
have any questions concerning  
this service.

Mr. Roy Budgell

621 Field Pond Road

Darlington, SC 29540

Phone: (843) 230-8673

[Roy.Budgell@railamerica.com](mailto:Roy.Budgell@railamerica.com)

This document is subject to the  
terms, conditions and guidelines  
provided in RailAmerica Tariff  
RA-1000.

The RA 1000 Section VI provides guidelines and provisions for switching and other accessorial charges. Please review these provisions as it applies to your business on the CPDR and SCRF. Any charges not covered on this CPDR and SCRF 7006 are subject to rules and provisions found in the RA 1000 Series Tariff.

# CPDR and the SCRF 7006-6

(Cancels all previous issues)

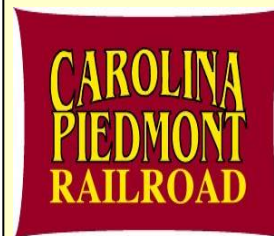
Carolina Piedmont and South  
Carolina Central

Customer Switching

Billing Guarantee

Timely Invoicing

Our top priority is to provide  
safe, reliable transportation  
for our customers. Part of  
that commitment is to  
maintain a fluid and  
adequate supply of rail cars  
and to ensure that all railcar  
assets, both railroad and  
privately-owned, are utilized  
as optimally as possible.



# CHARGE SCHEDULE

Intra-Plant Switch	\$225	Item 1000
Intra-Terminal Switch	\$290	Item 1010
Inter-Terminal Switch	\$290	Item 1020
Diversion/Reconsignment	\$350	Item 1650
Error Moves	\$390	Item 1040
Car Released Without Bill of Lading	\$250	Item 1050
Special Train Charges	Minimum \$2,000 Plus \$80/mile (total round-trip miles)	Item 1070
Closing Doors	\$150	Item 1080
Overload Charges	\$500	Item 1090
Empty Cars Ordered but Not Loaded	\$500	Item 1500
Cars Ordered and Cancelled While Enroute	\$150	Item 1510
Cars Received and Refused Due to Improper Condition	\$390	Item 1520
Empty/Loaded Cars Released but Not Available to Pull	\$500	Item 1530
Empty/Loaded Cars Ordered In But Unable to Place	\$500	Item 1540
Turning of Cars	\$290	Item 1350
Weighing	\$215 plus applicable switching (CPDR Only)	

# BILLING GUARANTEES

As part of our efforts to streamline the billing process, we are committing to an expedited and simple billing process.

## BILLING – ON TIME ITEM 1100

**We commit to bill you on time**

We will issue Customer Switching and Accessorial Services invoices monthly.

## BILLING DISPUTES ITEM 1110

**We commit to addressing disputed bills quickly**

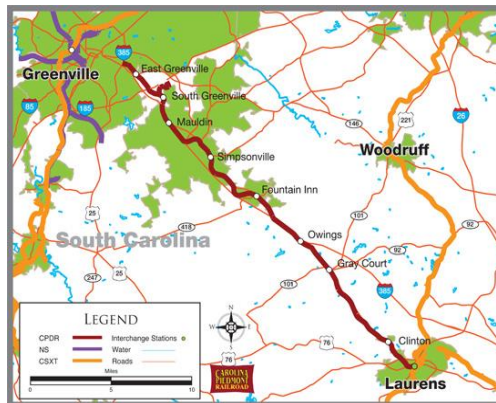
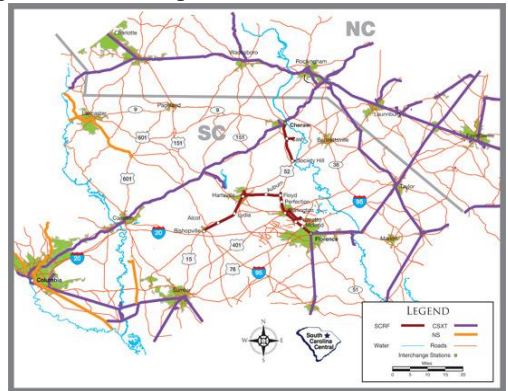
If you believe that there has been a billing error, we want to make it right as quickly as possible. To be eligible for this guarantee, you must submit your claim, in writing, within 30 days of the invoice date to **Revenue Billing 7411 Fullerton St. Ste 300 Jacksonville, FL 32256**. Along with a brief description, your claim must include the car initial and number and the related invoice number.

## GUARANTEED ON-TIME RESPONSE ITEM 1120

**If we don't respond within 30 days, your dispute will be accepted "as is."**

We are committed to responding to your claim in a timely manner. If we do not respond to your dispute, in writing, within 30 days your dispute will be accepted as is.

S  
C  
R  
F



C  
P  
D  
R

# Optional Services Catalog Customer Switching and Accessorial Services

## ADDENDUM 1 CPDR & SCRF

### SWITCHING IN REVERSE DIRECTION

When it is requested to provide a switch to a customer's location and the switching must be done in the reverse direction, an additional switch charge will be assessed for \$365 to that customer.

### HANDLING OF EMPTY FREIGHT CARS

*This provision will not apply when the empty movement is immediately preceded by a loaded revenue movement on the CPDR or SCRF and empty is returned to original interchange or if the empty movement is immediately followed by a loaded revenue movement on the CPDR or SCRF.*

This provision applies on all types of rail cars, including, but not limited to, cars provided by railroads, leased cars and cars bearing other than railroad reporting marks, but not including passenger train cars.

The charge for movement of empty cars is \$500.00. The CPDR or SCRF will not be responsible for the payment of any per diem or mileage charges, nor will the CPDR or SCRF absorb any switch charges. This rate will apply only to movement of cars in regularly scheduled train service, or to movement of not less than 25 cars shipped in one day, on one bill of lading, to one destination.

If special train service is required for movements other than those listed above, special train charges in the charge schedule of page 2 of this catalog will apply.

Charges are subject to CPDR or SCRF 9002-b Fuel Surcharge Tariff.

The CPDR or SCRF's maximum liability for loss and damage is **\$100.00 per railcar**.

# Optional Services Catalog

## Customer Switching and Accessorial Services

# ADDENDUM 1

## CPDR & SCRF

### **METHOD FOR SUBMISSION OF FORWARDING INSTRUCTIONS**

CPDR/SCRF will accept forwarding instructions through one of three methods at no charge; ShipperConnect (e-BOL), a Class I web site, or by making arrangements directly with third party logistics services providers to submit forwarding instructions on their behalf via a Class I web site or via EDI. CPDR/SCRF will accept forwarding instructions to its Transportation Logistics Center (TLC) via fax (1.855.634.5101) or via email ([SCRF-cs@railamerica.com](mailto:SCRF-cs@railamerica.com) or [CPDR-cs@railamerica.com](mailto:CPDR-cs@railamerica.com)), subject to a \$35.00 charge per faxed or emailed bill of lading. This charge will be assessed to the online Customer of record with the railroad.

The CPDR/SCRF reserves the right to reject as an unreasonable request for service, any "fax" or "email" forwarding instructions that are illegible, whether due to poor transmission quality, poor or illegible handwriting, or otherwise. CPDR/SCRF will not accept delivery of forwarding instructions by US Mail, express service, personal delivery, or otherwise.

### **METHOD TO RELEASE EMPTY RAILCARS**

CPDR/SCRF will accept empty release information using ShipperConnect™ at no charge. CPDR/SCRF will accept empty release information to its Transportation Logistics Center (TLC) via fax (1.855.634.5101) or via email ([SCRF-cs@railamerica.com](mailto:SCRF-cs@railamerica.com) or [CPDR-cs@railamerica.com](mailto:CPDR-cs@railamerica.com)), subject to a \$35.00 charge per faxed or emailed release. This charge will be assessed to the online Customer of record with the railroad.

### **DATE AND TIME RECORD OF NOTIFICATIONS**

When electronic or mechanical devices are used to furnish forwarding instructions and/or empty release information to CPDR/SCRF, the recorded date and time at which the instructions are received by CPDR/SCRF will govern.