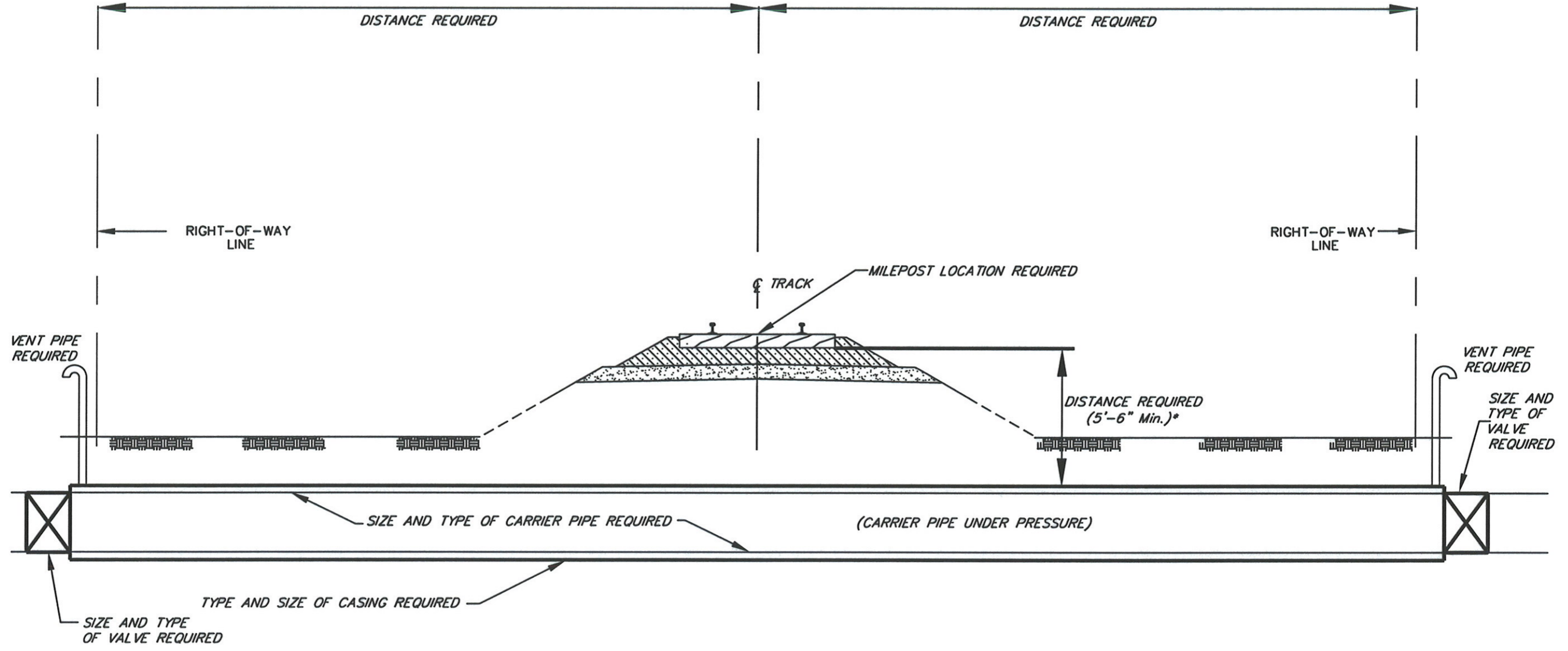


NAME OF RAILROAD (REQUIRED)

FILE
ES8090.6
REVISIONS
06-28-2011 T.J.F./XRL



GENERAL NOTES

1. PVC WILL NOT BE PERMITTED AS CASING OR CARRIER PIPE ON RAILROAD RIGHT-OF-WAY
 2. CITY, COUNTY, STATE AND RAILROAD MILEPOST LOCATION REQUIRED.
 3. IF HDPE PIPE IS USED, IT MUST BE SCHEDULE 40 AND MAY ONLY BE USED FOR DIRECTIONAL BORE. A DISTANCE OF 10' MEASURED FROM BOTTOM OF TIE TO TOP OF PIPE IS REQUIRED.
 4. NO WORK WILL BE PERMITTED ON RAILROAD RIGHT-OF-WAY WITHOUT A FLAGMAN.
- *=10' FOR UNCASSED GAS. (STEEL CARRIER REQUIRED)



Issue Date: 09-12-2008 Revised Date: 06-28-2011
 Authorized: *James S. Romaine*
 AVP-Engineering Services

The material and equipment shown herein must meet or exceed all quality requirements. Any deviation from these standards must be submitted in writing and approved by the Railroad Director of Engineering Services prior to use.

MISCELLANEOUS
 SERIES 8000

INFORMATION REQUIRED FOR
 TYPICAL JACK & BORE
 (CARRIER PIPE UNDER PRESSURE)

ES8090.6
 SH. 1 OF 1